

Summary of Mineral Block
Part A- GENERAL INFORMATION ABOUT MINERAL BLOCK

Sl. No.	Features	Details
1.	Location	
	Mineral Block	A-06 Reddipalayam (Sub Blocks A, B) Limestone Block
	Corner Points (Latitude Longitude)	See Appendix 1
	Villages	Reddipalayam
	Tehsil/Taluka	Ariyalur
	District	Ariyalur
	State	Tamil Nadu
2.	Area (Hectares/ Square Kilometres)	51.438 Ha
	Mineralised Area	51.438 Ha
	Non-Mineralised Area	Nil
3.	Exploration	
	Status	G2
	Exploration Agency	M/s KIOCL Limited
	Total Number of Boreholes with meterage	04 Boreholes 324.90 m
	Borehole Spacing (Density)	400 m
4	Quantity of Minerals (Grade-wise)	
	Cement Grade Limestone (> 44% CaO)	Indicated Mineral Resources (G-2): Sub Block 01- 66,33,907.28 MT (CaO%- 48.95, MgO%- 0.8, SiO2%- 4.33) Sub Block 02- 2,65,55,091.16 MT (CaO%- 48.95, MgO%- 0.8, SiO2%- 4.33)
	Total Resources	3,31,88,998.44 MT (CaO%- 48.95, MgO%- 0.8, SiO2%- 4.33)
5	Mineralised Zones	
	Number of mineral zones	One
	Trend (Dip and Strike)	Strike- N-S to NNE-SSW Average Dip- 7.5 ^o due east
	Total Thickness	Average Thickness- 38.41 m
6	Accessibility	
	Nearest Rail Head	Ariyalur, 15 Km
	Road	Block is situated adjacent to National Highway 81 and State Highway 139
	Airport	90 Km from Tiruchirappalli
7	Hydrography	
	Local Surface Drainage Pattern (Channels)	-
	Rivers/Streams	No perennial river/streams, seasonal stream flows through the block
8	Climate	
	Mean Annual Rainfall	Approximately 736.70 mm/annum
	Temperatures (December)	>24.9 ^o C
	Temperatures (June)	39 ^o C

9	Topography	
	Toposheet No.	58 M/04
	Morphology of the Area	Gently Undulating

PART B – PARTICULARS OF STATUTORY LICENSES, PERMITS, PERMISSIONS, CONCESSIONS, APPROVALS AND CONSENTS RELATED TO MINING OPERATIONS

<i>Sl. No.</i>	<i>Particulars</i>	<i>Details/ Status</i>
1	Forest clearance	As Applicable
2	Wild life clearance (sanctuary, reserve or special zone clearances)	As Applicable
3	Mining Plan Approval	To be obtained by the Preferred / Successful Bidder
4	Environmental clearance	To be obtained by the Preferred / Successful Bidder
5	Consent to establish	To be obtained by the Preferred / Successful Bidder
6	Explosive license	To be obtained by the Preferred / Successful Bidder
7	Permission for mine opening	To be obtained by the Preferred / Successful Bidder
8	Permission of installation/ trial operation of equipment	To be obtained by the Preferred / Successful Bidder
9	Ground water clearance (Centre/State)	To be obtained by the Preferred / Successful Bidder
10	Railway siding approval	To be obtained by the Preferred / Successful Bidder
11	Approval for diesel storage	To be obtained by the Preferred / Successful Bidder
12	Power line from State Discom	To be obtained by the Preferred / Successful Bidder
13	Clearances relating to work under an existing transmission line or shifting of the transmission line	To be obtained by the Preferred / Successful Bidder
14	Grama Sabha consent	To be obtained by the Preferred / Successful Bidder
15	Any other clearances to start mining operation	To be obtained by the Preferred / Successful Bidder

PART C – PARTICULARS OF LAND

Sl. No.	Details	Block A	Block B	Total
1.	Total Concession Area (Ha)	10.650	40.788	51.438
2.	Forest Land with Status	Nil	Nil	Nil
3.	Land owned by the State Government (Including Temple Land 0.72 Ha)	Nil	2.431	2.431
4.	Land not owned by the State Government	10.650	38.357	49.007
5.	Revenue survey details of the area	As per the Attached Cadastral Plan		

Appendix 1: Block Boundary Corner Points

WGS 84 spheroid and datum

Boundary Point A06 Reddipalayam Sub-Block (B)

BP No.	Easting	Northing
1	300025.87	1227325.37
2	300031.69	1227325.44
3	300069.47	1227326.27
4	300070.90	1227326.47
5	300081.01	1227327.13
6	300094.80	1227327.57
7	300121.75	1227327.64
8	300252.84	1227344.23
9	300366.45	1227502.90
10	300375.19	1227514.78
11	300382.50	1227535.64
12	300389.81	1227555.67
13	300410.92	1227615.76
14	300445.05	1227708.41
15	300333.39	1227723.12
16	300337.55	1227736.49
17	300346.52	1227763.14
18	300341.46	1227765.03
19	300333.30	1227768.60
20	300319.44	1227774.13
21	300297.99	1227782.51
22	300298.01	1227788.44
23	300285.80	1227791.15
24	300250.54	1227799.78
25	300251.43	1227807.59
26	300255.46	1227877.63
27	300226.57	1227880.71
28	300195.08	1227883.20
29	300195.29	1227898.40
30	300195.51	1227913.08
31	300195.74	1227927.24
32	300195.96	1227941.92
33	300196.18	1227956.60
34	300196.57	1227962.89
35	300196.43	1227969.71
36	300168.05	1227973.31
37	300152.82	1227975.09

BP No.	Easting	Northing
38	300108.32	1227972.60
39	300065.90	1227975.84
40	300014.16	1227979.66
41	300009.79	1227945.79
42	300008.52	1227934.68
43	300007.79	1227931.92
44	299879.79	1227913.33
71	299540.45	1227183.59
71A	299646.92	1227367.23
71B	299749.26	1227527.53
71C	299841.34	1227523.52
71D	299864.33	1227745.45
72	299617.30	1227171.71
73	299750.07	1227152.75
74	299817.90	1227133.02
75	299840.21	1227131.34
76	299856.20	1227130.13
77	299892.06	1227128.17
78	299910.49	1227126.36
79	299953.63	1227124.01
80	299967.16	1227122.47
81	299996.01	1227122.50
82	300028.80	1227121.51
83	300030.89	1227174.28
84	300030.70	1227185.51
85	300030.05	1227209.33
86	300023.95	1227237.96
87	300024.50	1227262.77
88	300025.23	1227290.77

BOUNDARY POINT A06 REDDIPALAYAM SUB-BLOCK (A)

BP NO.	Easting	Northing
46	299700.43	1227920.96
47	299604.92	1227898.04
48	299568.50	1227901.49
49	299467.39	1227892.94
50	299468.51	1227880.38
51	299469.99	1227860.49
52	299470.93	1227840.59
53	299476.62	1227782.90
54	299477.65	1227772.42
55	299479.49	1227749.24
56	299484.35	1227687.94
57	299489.66	1227657.47
58	299494.60	1227628.25
59	299498.52	1227603.34
60	299500.63	1227591.75
61	299498.80	1227577.89
62	299486.07	1227491.49
63	299473.77	1227410.93
63A	299605.505	1227389.266
63B	299690.655	1227552.889
63C	299726.454	1227683.004

**LAND SCHEDULE MAP OF A-06 REDDIPALAYAM LIMESTONE BLOCK A & B
TAHSIL – ARIYALUR, DIST. – ARIYALUR, (TN),**

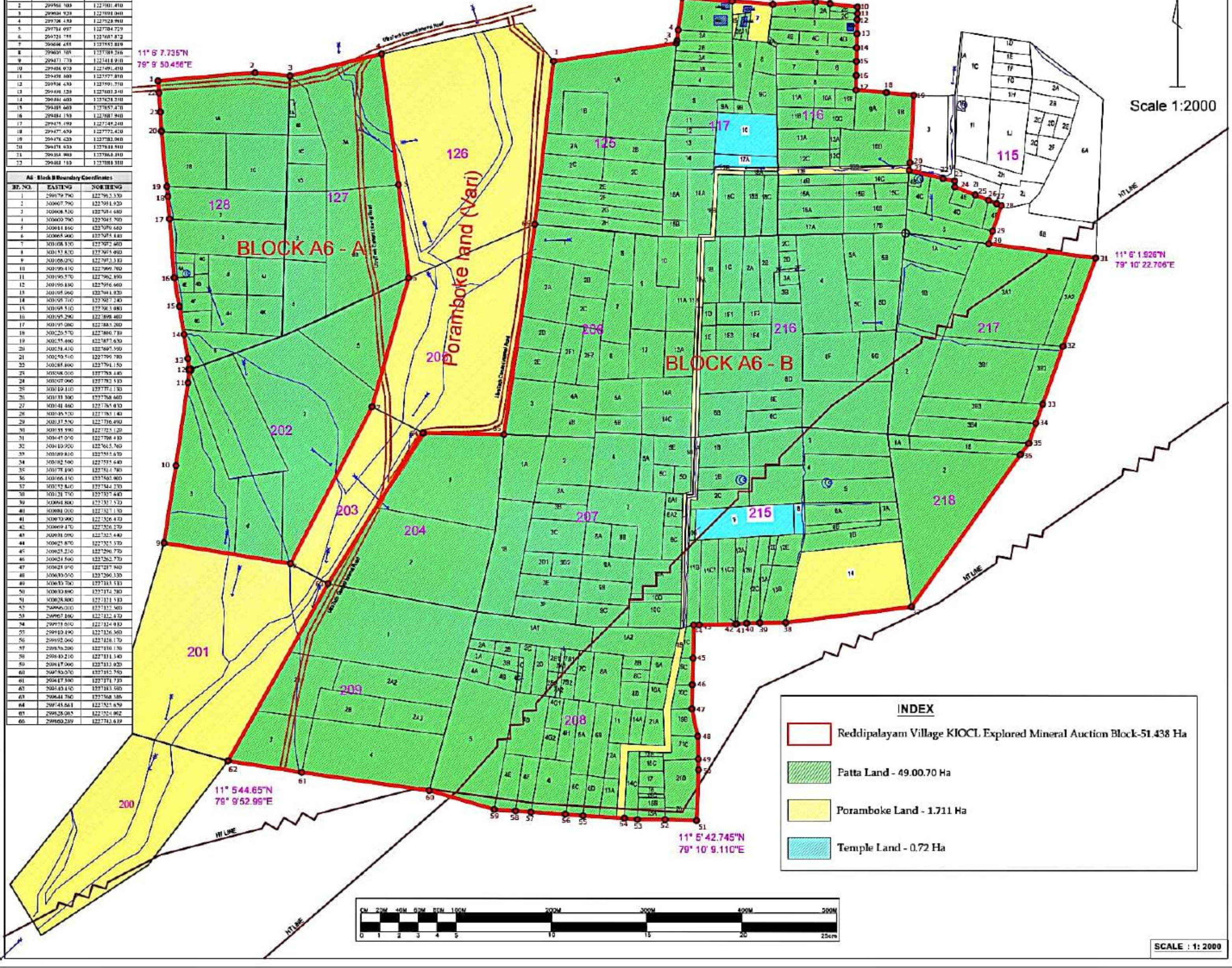
PART PLAN OF REDDIPALAYAM VILLAGE, ARIYALUR TALUK & DISTRICT

A6 - Block A Boundary Coordinates

BP. NO.	EASTING	NORTHING
1	294467.193	1227093.940
2	294466.183	1227091.410
3	294464.923	1227093.940
4	294466.183	1227093.940
5	294464.923	1227093.940
6	294466.183	1227093.940
7	294466.183	1227093.940
8	294467.193	1227093.940
9	294467.193	1227093.940
10	294466.183	1227093.940
11	294466.183	1227093.940
12	294466.183	1227093.940
13	294466.183	1227093.940
14	294466.183	1227093.940
15	294466.183	1227093.940
16	294466.183	1227093.940
17	294466.183	1227093.940
18	294466.183	1227093.940
19	294466.183	1227093.940
20	294466.183	1227093.940
21	294466.183	1227093.940
22	294466.183	1227093.940

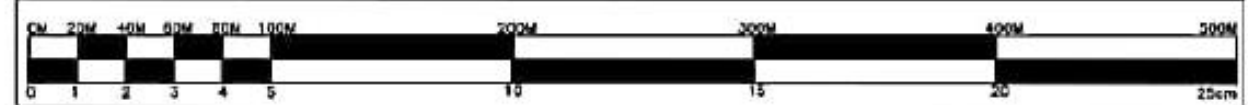
A6 - Block B Boundary Coordinates

BP. NO.	EASTING	NORTHING
1	300000.000	1227000.000
2	300000.000	1227000.000
3	300000.000	1227000.000
4	300000.000	1227000.000
5	300000.000	1227000.000
6	300000.000	1227000.000
7	300000.000	1227000.000
8	300000.000	1227000.000
9	300000.000	1227000.000
10	300000.000	1227000.000
11	300000.000	1227000.000
12	300000.000	1227000.000
13	300000.000	1227000.000
14	300000.000	1227000.000
15	300000.000	1227000.000
16	300000.000	1227000.000
17	300000.000	1227000.000
18	300000.000	1227000.000
19	300000.000	1227000.000
20	300000.000	1227000.000
21	300000.000	1227000.000
22	300000.000	1227000.000
23	300000.000	1227000.000
24	300000.000	1227000.000
25	300000.000	1227000.000
26	300000.000	1227000.000
27	300000.000	1227000.000
28	300000.000	1227000.000
29	300000.000	1227000.000
30	300000.000	1227000.000
31	300000.000	1227000.000
32	300000.000	1227000.000
33	300000.000	1227000.000
34	300000.000	1227000.000
35	300000.000	1227000.000
36	300000.000	1227000.000
37	300000.000	1227000.000
38	300000.000	1227000.000
39	300000.000	1227000.000
40	300000.000	1227000.000
41	300000.000	1227000.000
42	300000.000	1227000.000
43	300000.000	1227000.000
44	300000.000	1227000.000
45	300000.000	1227000.000
46	300000.000	1227000.000
47	300000.000	1227000.000
48	300000.000	1227000.000
49	300000.000	1227000.000
50	300000.000	1227000.000
51	300000.000	1227000.000
52	300000.000	1227000.000
53	300000.000	1227000.000
54	300000.000	1227000.000
55	300000.000	1227000.000
56	300000.000	1227000.000
57	300000.000	1227000.000
58	300000.000	1227000.000
59	300000.000	1227000.000
60	300000.000	1227000.000



INDEX

- Reddipalayam Village KIOCL Explored Mineral Auction Block-51.438 Ha
- Patta Land - 49.00.70 Ha
- Poramboke Land - 1.711 Ha
- Temple Land - 0.72 Ha



SCALE : 1: 2000